

WED, FEB 08, 2023 | UPDATED 15:37 PM IST



THE TIMES OF INDIA

- Opinion
- Times View
- Readers' Blog
- Times Evoke
- City
- India
- World
- Entertainment
- Sports
- Spirituality
- Business

NEWS / BLOGS / INDIA / Electrical safety tips for the monsoon season

INDIA

Electrical safety tips for the monsoon season

July 24, 2022, 2:09 PM IST / Saurabh Goel in Voices, India, TOI

- FACEBOOK
- TWITTER
- LINKEDIN
- EMAIL

Saurabh Goel
Saurabh Goel is the president, Havells India

Monsoon is not just a word, but a metaphor for hope, peace, celebration, adventure etc. in various parts of India. It is generally expected to last from June to September.

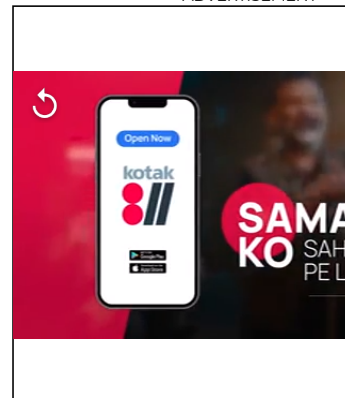
The impact of monsoon on the local weather is different from place to place. In some places there is just a likelihood of having a little more or less rain. In other places, quasi semi-deserts are turned into vivid green grasslands where all sorts of plants and crops can flourish.

Indian people tend to focus on consumption of alkaline water, home-cooked food to avoid communicable disease and maintain good health but Often investing in safe and robust electric circuit protection devices, takes a backseat due to lack of awareness.

In the rainy season, we all hear a lot about accidents and as per some studies the risk of electrical accidents increases by as

WRITE FOR TOI BLOGS

ADVERTISEMENT



BLOGS BY SAURABH GOEL

- 1 Vaccination against electric shocks
- 2 Safety shield to prevent your family from unwarranted electrical accidents
- 3 5 best practices to de-risk home from electrical hazards

MORE BLOGS >

TOP VOICES



much as 30% during monsoon and brief illustration such mishap can broadly defined:

- Damage of expensive electronic gadgets due to lightning
- Death due to Electrocutation
- Short circuit due to poor insulation of cables
- Failure of electrical equipment due to moisture and seepage
- DG set / transformer blast due to water logging.

The risk of electrocution and electrical related disaster can be minimized by proper knowledge sharing and following good wiring practices in accordance with NEC 2011. At times, we fail to realize the danger lurking in our homes which can transform the everyday harmless appliances to objects of danger.

As per the IMD department, it is predicted that there will be an increase in rainfall activity in Southern, northern and central India in July 2022. Cognizant of the implications of the electrical hazards created by inclement rainy weather, it is imperative to pay attention to 'veins and arteries' of your home during the monsoon season.

Cities in Europe and other developed countries have 100 per cent compliance to ELCBs/RCCB and generally install one RCCB/RCBO against each socket level outlets which is vulnerable for human touch while inserting the plug and probable electrocution.

The galling laxity In India is often taken in the decision of investing on electrical circuit protection devices. It is difficult to comprehend that this basic piece of information is neglected. With the increasing electrical load and higher dependence on electrical and electronic



Sanjiv Shankaran

Cash Flow



Chidanand Rajghatta

Ruminations,TOI News,Tracking India...



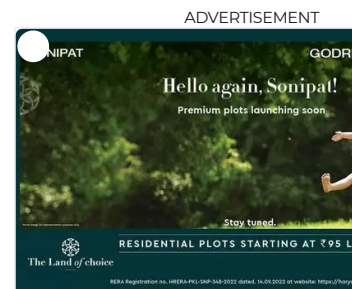
Indrajit Hazra

Red Herring



Pooja Bedi

Heartchakra



Launching Premium Plots So Godrej Green Estate.

AD Godrej Green Estate

TOP EDITORIALS

- 1 Short Sellers: A short, murky history – Outfits like Hindenburg often push ethical boundaries. But the lesson from the Adani episode is that good corporate governance is the best defence against such attacks
- 2 Pakistan conundrum: Islamabad's economic collapse won't be good for India
- 3 How boredom can lead you to love or the love charger

equipment, it is mandatory that our electrical infrastructure has built in Residual current protection devices.

Some of the safety tips that can be adopted to help our loved ones to stay safe and safe-guard our hard earned home appliances especially during monsoon.

Invest in Surge Protection devices in order to protect your expensive home appliances against lightning surges.

Surge protection device (SPD) inhibit transient voltages and divert surges into underground thereby protecting expensive electronics and appliances. Voltage Surge protection devices are highly suitable for areas with thunderstorms, cyclone & circuit bearing electronic equipment. The innovative thought of installing do it yourself (DIY) type 3 adaptor form surge arrestor devices can eliminate the probability of blowing of expensive TV sets and electronic gadgets during surges created during lightning / thunderstorm.

India saw 13M dangerous lightning strikes last year as per report and major states effected are Tamil Nadu, Andhra Pradesh, Karnataka, Odisha and west Bengal turning out to be among the top vulnerable states in terms of reporting this weather phenomena.

During these thunderstorm phenomena a huge surge voltage gets created and penetrates building through overhead lines resulting into destructive catastrophe such as blowing of expensive electronic equipment/gadgets in fraction of a second if not equipped with right protection device.

Generally older buildings do not have electrical voltage surge protection devices built in their electrical plans. According to

the data from ICA-India, about 35 % of short circuits and fire accidents reported are from building with outdated electrical layouts; Frequent voltage surges can damage every single electric equipment in a house in a split second if surge protection is not a part of the circuitry. The surge protection devices inhibit transient voltages and divert surges into the earth thereby by-passing the device, thereby protecting the expensive electronic appliances.

Install life-saving devices RCCB or ELCB to prevent harm and current leakage

The governments across states/DISCOMS have taken various initiatives to make RCCB/ELCB compulsory. Still, the challenge of installing RCCB continues to persist. RCCB or ELCB is the most overlooked device in homes, with nearly 90% of homes do not have one. This creates room for big disasters. If an internal wire breaks, it can energize the metal housing, which in-turn can result in a nasty shock to a human being. In recent times, Innovative solution have been introduced to make it easier for customers to adopt the safety measures. ELCB / RCCB plug tops or adaptors giving socket level current leakage protection, can be installed with washing machines, air coolers, water heaters (geysers) – essentially all devices which are more susceptible to the interplay of water–electricity-Human. Hence, it is important to ‘inoculate’ the house by installing RCCB Vaccination, against Electrical Shocks.

Quality wires (Higher Insulation resistance) to manage electrical fire risk

It is to be noted that nearly 20 percent of all accidental fires that take place are not only due to short circuits but poor-quality wires and in appropriate wiring practices

as well. Ensuring compatibility of wires with the electrical load is essential in homes since these are the 'veins and arteries' of our homes and should be of good quality and right rating.

Insulated wires and cables are non-conductive material that offers high resistance to electric current.

The insulation protects the wire /cable from the exterior. Due to robust quality insulation, the wire gets protection from getting in contact with the other conductors, keeps it away from any environmental hazardous and controls probable electric leakage.

Over a long period of time the cable tend to see a lots of fault such as overload & short-circuit. All these perpetual phenomena will affect the protective sheathing, often referred to as insulation. The protective sheathing will degrade and wear out quicker than the actual wire itself.

The central aspect determining electrical wiring life expectancy is the protective sheathing condition.

In all cables over a period of time, there is generally leakage of current from the live conductor through the insulation. In case of inferior quality of insulation, the amount of leakage current increases drastically.

Premium test laboratories & International safety standards specifies that current leakage limit in hand equipment is considered to be safe if the leakage value is not more than 0.75mA.

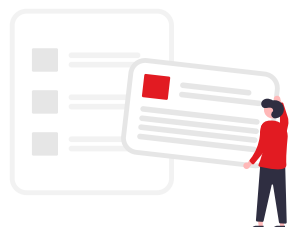
This leakage is dangerous for human safety. Better insulation or high insulation resistance in cables protect the humans from electrical shocks.

The choice of quality wire helps in mitigating environmental impact to maximum extent.

Usage of Miniature circuit breaker (MCB) in incomer distribution boards to prevents over load and short circuits in domestic and commercial installation.

Overloading of current is common phenomena in today's modern-day homes. Installation of devices such as MCB ensures to disconnect the supply during the fault. These circuit breakers come in different ratings for different types of loads and hence need to be used of the correct rating for the load and from quality brand with mandatory ISI marking contrary to the popular belief, these safety equipment and products are very pocket friendly, almost at a fraction of a cost when compared to the essential protection it offers. Though, sometimes the right knowledge may be missing, for which expert help must be sought.

To reiterate given the intensity of increasing electrical hazards in monsoon season, safety comes first and should be ensured without fail. It is always better to use the best quality electrical devices than finally paying for the loss caused by sudden electrical accidents. Just a little modification to the electrical fittings in your home can save the lives of loved ones and assure peace of mind.

[FACEBOOK](#)[TWITTER](#)[LINKEDIN](#)[EMAIL](#)

START A CONVERSATION

ADD COMMENT

DISCLAIMER

Views expressed above are the author's own.

END OF ARTICLE

FROM AROUND THE WEB

Sponsored by



SHAH HOME APPLIANCES WET GRINDER...
AD AMAZON



Sparx Women SL-170 C.Grey Pink Sports...
AD AMAZON



CatBird Women Olive Anti Slip Loafer Shoes 7...
AD AMAZON



CatBird Women Olive Anti Slip Loafer Shoes 5...
AD AMAZON



Motorola Moto



Bosch Clean Air



road runner



दुनिया हैरान ! इस



- About us
- Create Your Own Ad
- Terms of Use and Grievance Redressal Policy
- Privacy policy
- Advertise with us
- RSS
- Newsletter
- Feedback
- ePaper
- Sitemap
- Archives

FOLLOW US ON



OTHER TIMES GROUP NEWS SITES

POPULAR CATEGORIES

- Headlines
- Sports News
- Business News
- India News
- World News
- Bollywood News
- Health & Fitness Tips
- Indian TV Shows
- Celebrity Photos

TOP TRENDS

- Turkey Earthquake Live
- India China LAC
- Aaditya Thackeray
- CBSE Admit Card
- Ranji Trophy Live Score
- RBI MPC Meeting

HOT ON THE WEB

- Propose Day Wishes
- Propose Day Quotes
- Kiara Advani
- Shark Tank India 2
- Anxiety Symptoms
- Sid-Kiara reception
- Optical Illusion
- Kiara Advani
- Bollywood Bride
- MS Dhoni Farmhouse

TRENDING TOPICS

- Propose Day 2023 Wishes
- Shehnaaz Gill
- Valentine Week 2023 Full List
- High Cholesterol
- Valentine's Day Gift Idea
- Kiara-Sidharth Wedding

The Economic Times	Malayalam Samayam	Horoscope Today	New Income tax slabs	Photo Valentine Week 2023	Rashmika Mandanna
Hindi Economic Times	Ei Samay I am Gujarat	Earthquake in Turkey	Zoom Layoffs Meghalaya	World Cancer Day	Celebs Look Parenting Tips
Navbharat Times	TimesPoints	Mumbai Airport	Elections Nagaland	Prabhas-Kriti Engagement News	Madhuri Dixit Pooja Hegde
Maharashtra Times	Brand Capital Education Times	RBI Repo Rate	Elections Tripura	Kiara Advani Saree Look	Vivo Y55s Laptops under 30000
Vijaya Karnataka	Times Food	IND vs AUS 1st Test	Elections Cryptocurrency	Valentine's Week Full List 2023	WiFi Routers Tablets under 15000
Telugu Samayam	Miss Kyra Mumbai Mirror	Shraddha Walkar Murder	Price in India		
Tamil Samayam	Bangalore Mirror				
		LIVING AND ENTERTAINMENT		SERVICES	
		iDiva	Filmfare	CouponDunia	Times Mobile
		MensXP.com	Online Songs	Magicbricks	Gadgets Now
		Femina	TV	TechGig	Careers
		ETimes	Lifestyle	TimesJobs	Colombia
		Grazia	Longwalks App	Bollywood News	
		Zoom	Newspaper		
		Travel	Subscription		
		Destinations	Food News		
		Bombay Times	Times Prime		
		Cricbuzz.com	Whats Hot		